

# e4 UI demos

Szymon Brandys   Tomasz Zarna

Eclipse Platform Workspace Team  
IBM Poland

2009-11-28 / Eclipse DemoCamp



- 1 e4
- 2 Demos



- 1 e4
- 2 Demos



## e4 = Eclipse 4.0

- Simplify the Eclipse programming model
- Enable the platform for use on emerging web-based runtime technologies
- Broaden participation in development of the platform



- Flexible Resources for Next Gen Apps and Tools
- CSS Styling
- Modeled UI
- XWT - Eclipse XML Window Toolkit
- Web to Desktop, Desktop to Web



- Flexible Resources
- Workbench Model
- Eclipse Application Services
- Compatibility
- Declarative Construction Roundup
- Styling (CSS, XAML) Roundup
- JavaScript Support
- Hosting OpenSocial Gadgets in Eclipse
- Renaming Eclipse RCP
- Eclipse-based Bespin Server
- ...



- 1 e4
- 2 Demos



# Compatibility layer

Running e4 0.9 SDK

Java - org.eclipse.e4.ui.examples.legacy.workbench/plugin.xml - e4 Compatibility Platform

File Edit Source Refactor Navigate Search Project Run Window e4 Help

Package Explorer

- org.eclipse.e4.ui.examples.legacy
- org.eclipse.e4.ui.examples.css
- org.eclipse.e4.ui.examples.css.met
- org.eclipse.e4.ui.examples.css.rc
- org.eclipse.e4.ui.examples.legac
- JRE System Library [J2SE-1.5]
- Plug-in Dependencies
- src
  - org.eclipse.e4.ui.examples
    - Activator.java 1.3
    - AnimationSplashIondk
    - GeneratePshandler.ic
    - ReStyle.java 1.2
    - TestPerspectiveFactor
    - WorkspaceValue.java
    - e4-examples.pdf 1.1
    - README.html 1.1
- css
  - webby.css 1.22
  - xp-silver-legacy.css 1.6
- META-INF
- splash
  - about.html 1.1
  - build.properties 1.7
  - edipse\_32.gif 1.1
  - edipse.gif 1.1
  - edipse.png 1.1
  - edipse24.gif 1.1
  - edipse32.gif 1.1
  - edipse32.png 1.1
  - edipse48.gif 1.1
  - edipse48.png 1.1
  - intro-edipse.png 1.1
  - introData.xml 1.1
  - legacy-edipse.product 1.10
  - pc.inf 1.1

Overview

General Information

This section describes general information about this plug-in.

ID: org.eclipse.e4.ui.examples.legacy.workbench

Version: 0.9.0.qualifier

Name: %pluginName

Provider: %providerName

Platform Filter:

Activator: org.eclipse.e4.ui.example [Browse...](#)

Activate this plug-in when one of its classes is loaded

This plug-in is a singleton

Execution Environments

Specify the minimum execution environments required to run this plug-in.

J2SE-1.5 [Add...](#) [Remove](#)

Plug-in Content

The content of the plug-in is made u

- [Dependencies](#): lists all the plug plug-in's classpath to compile a
- [Runtime](#): lists the libraries that it's runtime.

Extension / Extension Point Con

This plug-in may define extensions a

- [Extensions](#): declares contributi makes to the platform.
- [Extension Points](#): declares new plug-in adds to the platform.

Testing

Test this plug-in by launching a sepa application:

- [Launch an Eclipse application](#)
- [Launch an Eclipse application in](#)

Outline

An outline is not available.

Problems Javadoc Declaration Progress Console

CVS Replace (Finished at 12:26)

[Show CVS Console](#)





# UI demos

Photo demo

The screenshot shows a window titled "Create Album" with a menu bar (File, Edit, Help). The interface is divided into several sections:

- Library:** A tree view showing "Album 1" containing ".project" and "iPhone 20081115 188.jpg", and "Album 2".
- Location:** A search bar with "Google Maps" logo and coordinates "45°21.28' -75°46.8'". Below it are links for "Web", "Images", "Maps", "News", "Shopping", "G", "bokowski@gmail.com", "My Profile", and "Help | My".
- Map:** A satellite map view with "Map", "Satellite", and "Terrain" tabs. A red pin labeled "A" is placed on the map, with a yellow line indicating a route. A "417" highway shield is visible.
- Photo:** A large image of a chocolate cake with white frosting and red fruit toppings on a green plate.
- Table:** A table with columns for metadata. The first row contains data for an iPhone photo.

| name        | make  | model  | c | s | timestamp  | gpsLatitude | gpsLongitude |
|-------------|-------|--------|---|---|------------|-------------|--------------|
| iPhone 2... | Apple | iPhone | 1 |   | 2008:10... | 45°21.28'   | -75°46.86'   |
|             |       |        |   |   |            |             |              |
|             |       |        |   |   |            |             |              |
|             |       |        |   |   |            |             |              |
|             |       |        |   |   |            |             |              |

**e4 Contacts Demo**

File Theme

- Dark Theme CTRL+D
- Bright Theme CTRL+L

| First Name | Last Name   |
|------------|-------------|
| Chris      | Aniszczyk   |
| Boris      | Bokowski    |
| Peter      | Friese      |
| Kevin      | McGuire     |
| Tom        | Schindl     |
| Hallvard   | Traetteberg |
| <b>Kai</b> |             |
| Yves       | YANG        |
| Angelo     | ZERR        |

**\*Details of Kai Todter**

**General**

Title: Modified to show the \* in the tab

First Name: Kai


Middle Name:

Last Name: Todter

Company: Siemens AG, CT SE 2

Job Title: Dipl.-Inform.

Note: Eclipse RCP Expert and OSGi Enthusiast



**Business Address**

Street: Otto-Hahn-Ring 6

City: Munich

ZIP: 81739

State/Prov:

Country: Germany

**Business Phones**

Phone: +49 (89) 63641064

Mobile: +49 (173) 7068910

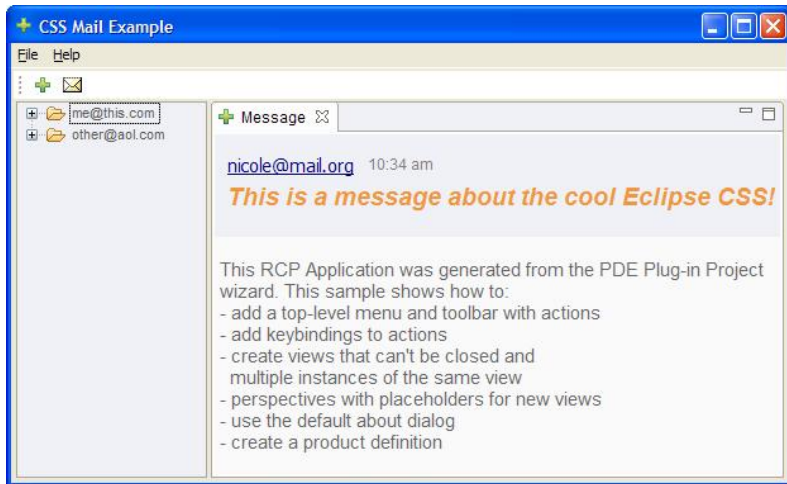
**Business Internet**

Email: kai.toedter@siemens.com

Web Page: http://www.ct.siemens.com

# UI demos

## CSS-styled RCP mail demo



Eclipse File Edit Source Navigate Search Project XWT Run Window Help  
XWT - Demo/src/demo/Hello.xwt - Eclipse SDK

Package Explorer

- Demo
  - JRE System Library [J2SE-1.5]
  - Plug-in Dependencies
  - src
    - demo
      - Hello.java
      - Hello.xwt
    - model
      - Address.java
      - Country.java
      - Demo.java
      - Person.java
  - META-INF
    - build.properties

Design Source java

```
<Composite xmlns="http://www.eclipse.org/xwt/presentation"
  xmlns:x="http://www.eclipse.org/xwt" xmlns:c="clr-namespace:
  xmlns:j="clr-namespace:java.lang" x:Class="demo.Hello">
  <Composite.layout>
    <GridLayout numColumns="4" />
  </Composite.layout>
  <Button x:style="SWT.PUSH" text="OK" />
</Composite>
```

Problems Properties XWT View

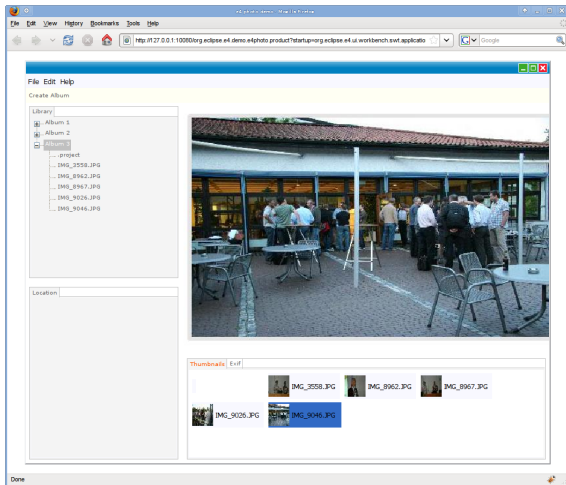
0 errors, 3 warnings, 0 others

| Description        | Resource | Path |
|--------------------|----------|------|
| Warnings (3 items) |          |      |
|                    |          |      |
|                    |          |      |

SWT Containers

- SWT Controls
  - Button
  - Browser
  - CCombo
  - CLabel
  - Combo
- SWT Buttons
- SWT Menu
- SWT ToolBar
- SWT Layouts
- IFace Viewers
- Data Binding

Composite/Button



# Milestones

Milestones, delivery dates

| Milestone | Delivery date |
|-----------|---------------|
| 1.0 M1    | 10/09/2009    |
| 1.0 M2    | 11/20/2009    |
| 1.0 M3    | 01/08/2010    |
| 1.0 M4    | 02/19/2010    |
| 1.0 M5    | 04/02/2010    |
| 1.0 M6    | 05/21/2010    |



# Communication channels

Are you ready to join?

- e4 mailing list
- e4 newsgroup
- #eclipse-e4 on irc.freenode.net
- meeting minutes
- All e4 bugs
- Enter an e4 bug



- [e4 project page](#)
- [wiki page](#)
- [downloads](#)
- [source code](#)





Thank you

*Thank you*

