



Eclipse Scout

Future Proof Business Applications

Modular Enterprise Applications

Matthias Zimmermann, Eclipse DemoCamp Zürich- 24.6.2015

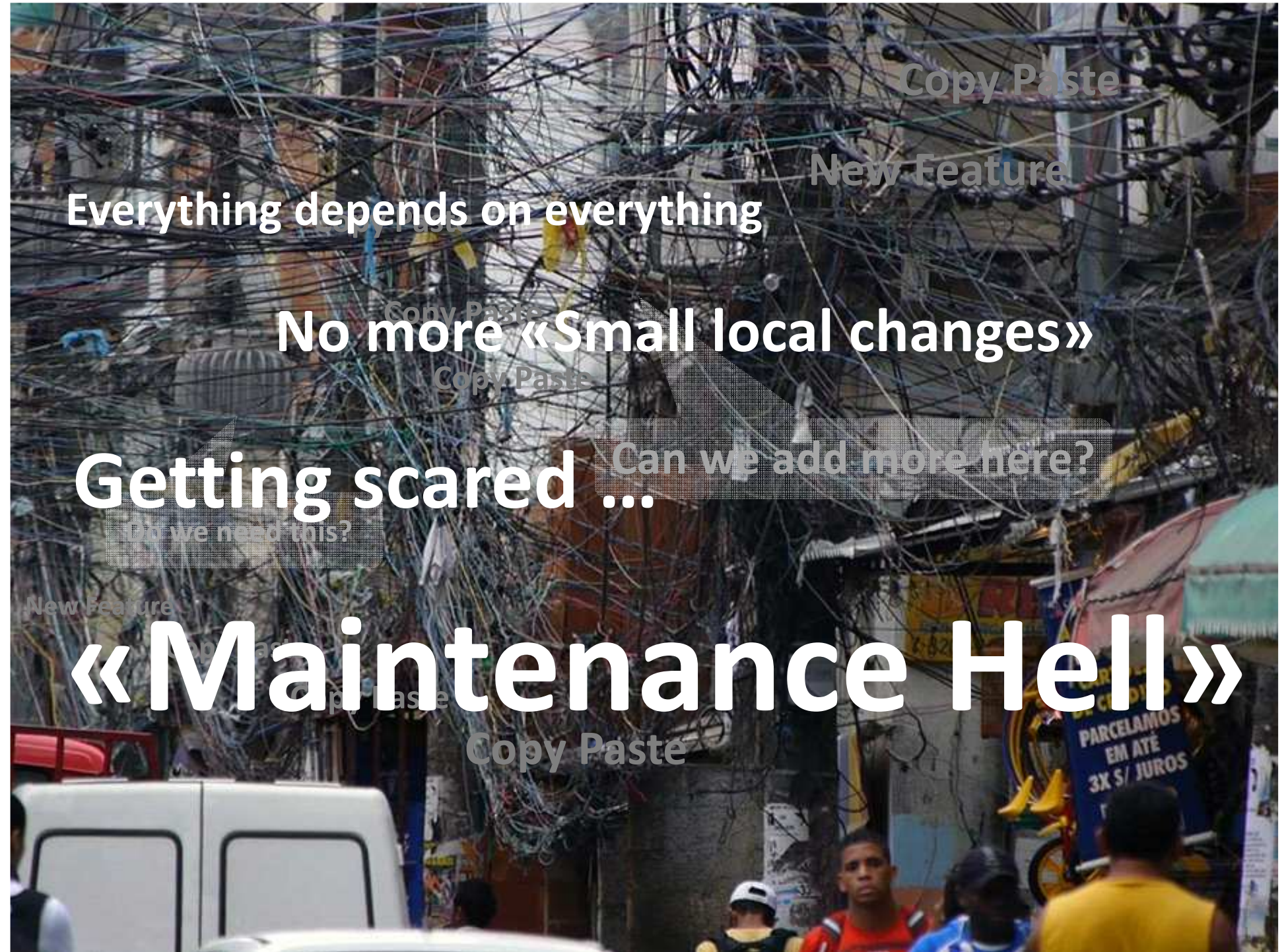


We want

- ➔ Requirments (tech/business) define modules
- ➔ Clear dependencies

Why care?





Copy Paste

New Feature

Everything depends on everything

Copy Paste
No more «Small local changes»
Copy Paste

Getting scared ...

Can we add more here?

Do we need this?

New Feature
«Maintenance Hell»
Copy Paste

Copy Paste

PARCELAMOS
EM ATÉ
3X S/ JUROS

Modular Enterprise Applications

We want

- Requirements (tech/business) define modules
- Clear dependencies

Why care?

- Keep a clean architecture over time

What we need

- The right mindset
- The right tools

Eclipse Scout

Scout Framework

- Built for **Business Applications**
- **Multi Device** support (desktop, tablet, mobile)
- **Client Server** architecture (layers)
- Support for **Business Modules** (slices)

Framework Goals

- **Long term** strategy
- Boost **productivity**
- **Simple** to learn

Eclipse Scout



Eclipse Scout

Budavár admin

Eclipse Scout

Budavár Tours partner hírlevél- Budavár Tours KRÉTA, SZEPTEMBER 03, UTOLSÓ HELYEK! szerkesztés

Helyadatok Segédadatok Programok Jogosult

Hírlevelek

- Kiküldött
 - ALDI
 - Budavár Tours hírlevél
 - Budavár Tours partner hírlevél
 - teszt hírlevél
- Mentett
 - ALDI
 - Budavár Tours hírlevél
 - Budavár Tours partner hírlevél
 - teszt hírlevél
- Ütemezett
 - ALDI
 - Budavár Tours hírlevél
 - Budavár Tours partner hírlevél
 - teszt hírlevél
- Sablonok
- Feliratkozók

Kréta

Kréta a mediterrán szigetvilág legváltozatosabb strandjaival megajándékozott szigete.

Kedves Kollégák!

- KRÉTA, SZEPTEMBER 03 – UTOLSÓ HELYEK!!

Sorszám: 2

Cím: Budavár Tours KRÉTA, SZEPTEMBER 03, UTOLSÓ HELYEK!

Szöveg:

Dátum: 2014. szeptember 2.

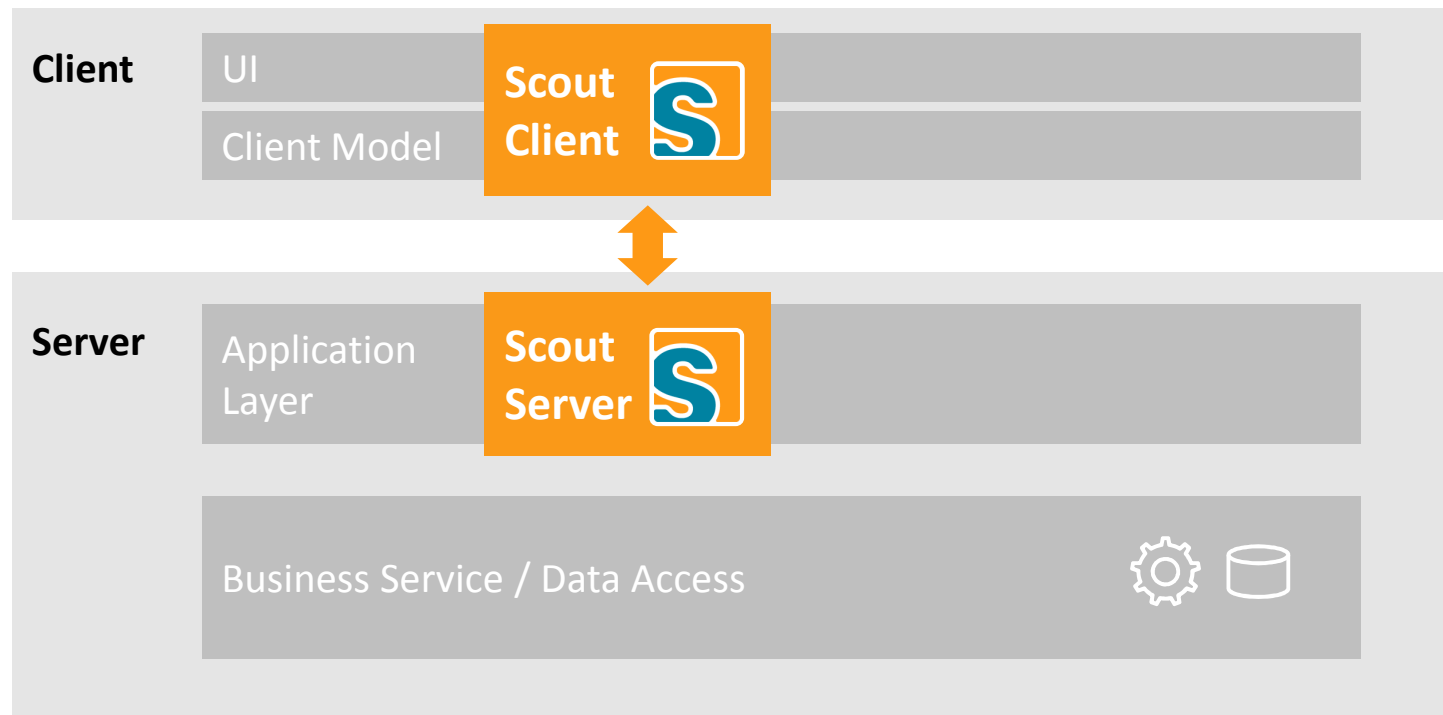
Feltöltés

- 27_KRETA_SZEPTEMBER_03_UTOLSÓ_HELYEK_.doc
- 27_KRETA_SZEPTEMBER_03_UTOLSÓ_HELYEK_.pdf

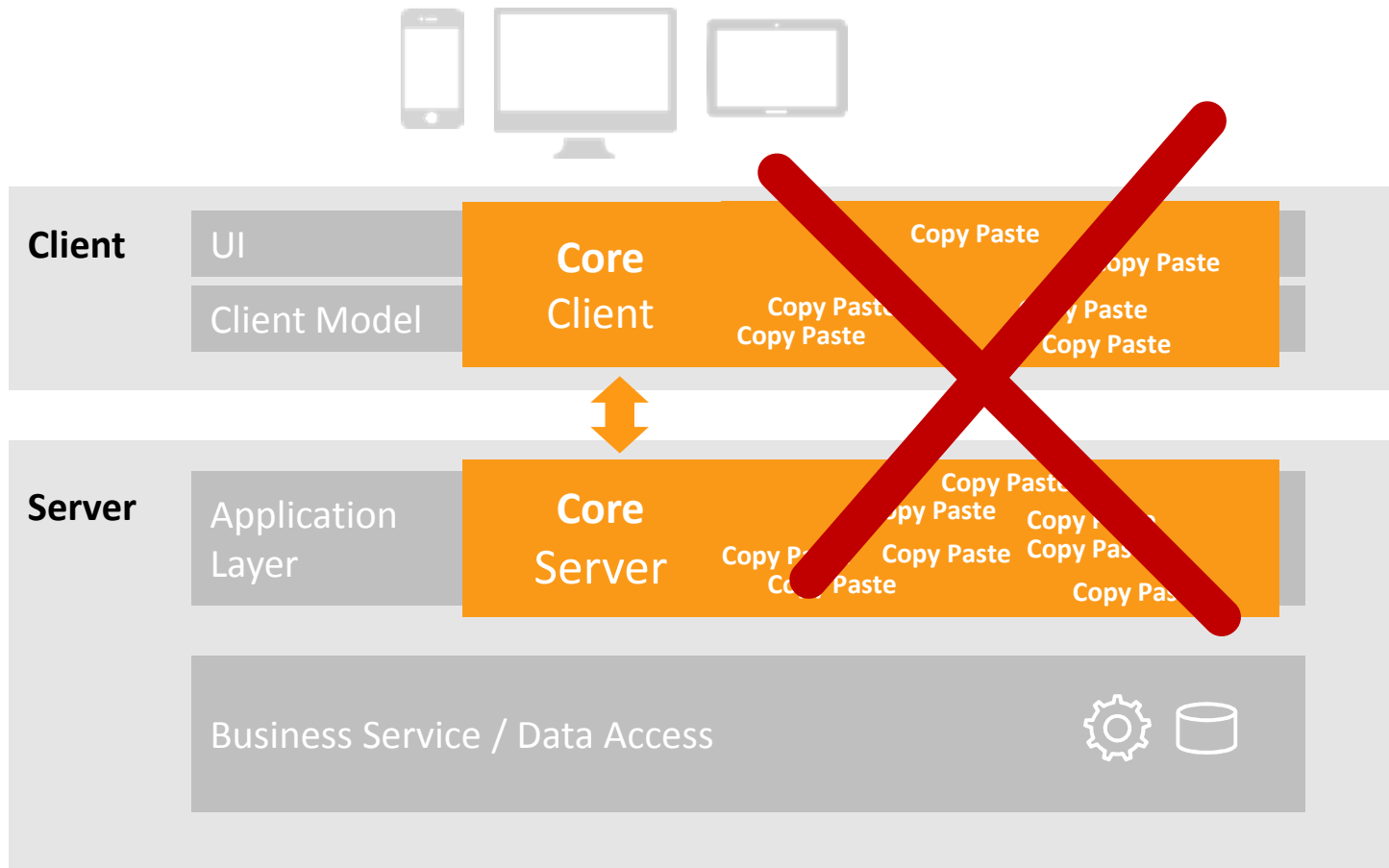
Ütemezés Teszt e-mail küldés Szerkeszt Bezár

ZAKYNTHOS SZEPTEMBERI ULM AKCIÓK!	2014.09.06. 10:00	2014.09.05. 18:36
Kréta SZEPTEMBER 10 – UTOLSÓ HELYEK HIHETETLEN ÁR...	2014.09.08. 9:02	2014.09.08. 9:02
Korfu	2014.09.08. 9:24	2014.09.08. 9:24
Budavár Tours ÉSZAK-CIPRUS szeptember 14,21,28 Last...	2014.09.08. 13:02	2014.09.08. 13:01

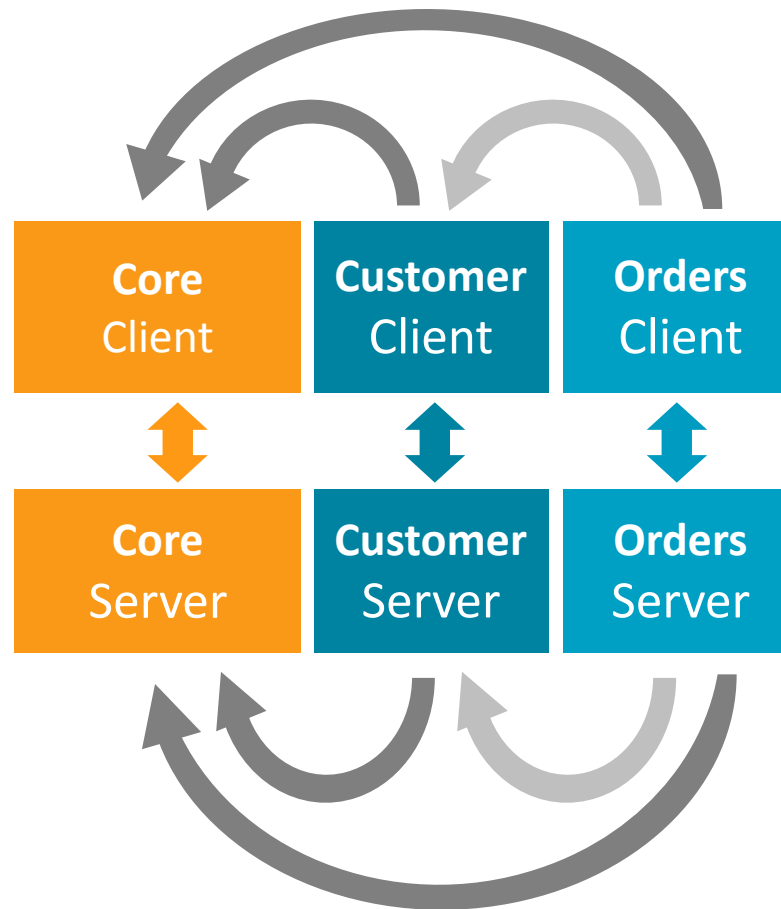
Scout Modularity: Layers



Scout Modularity: Layers



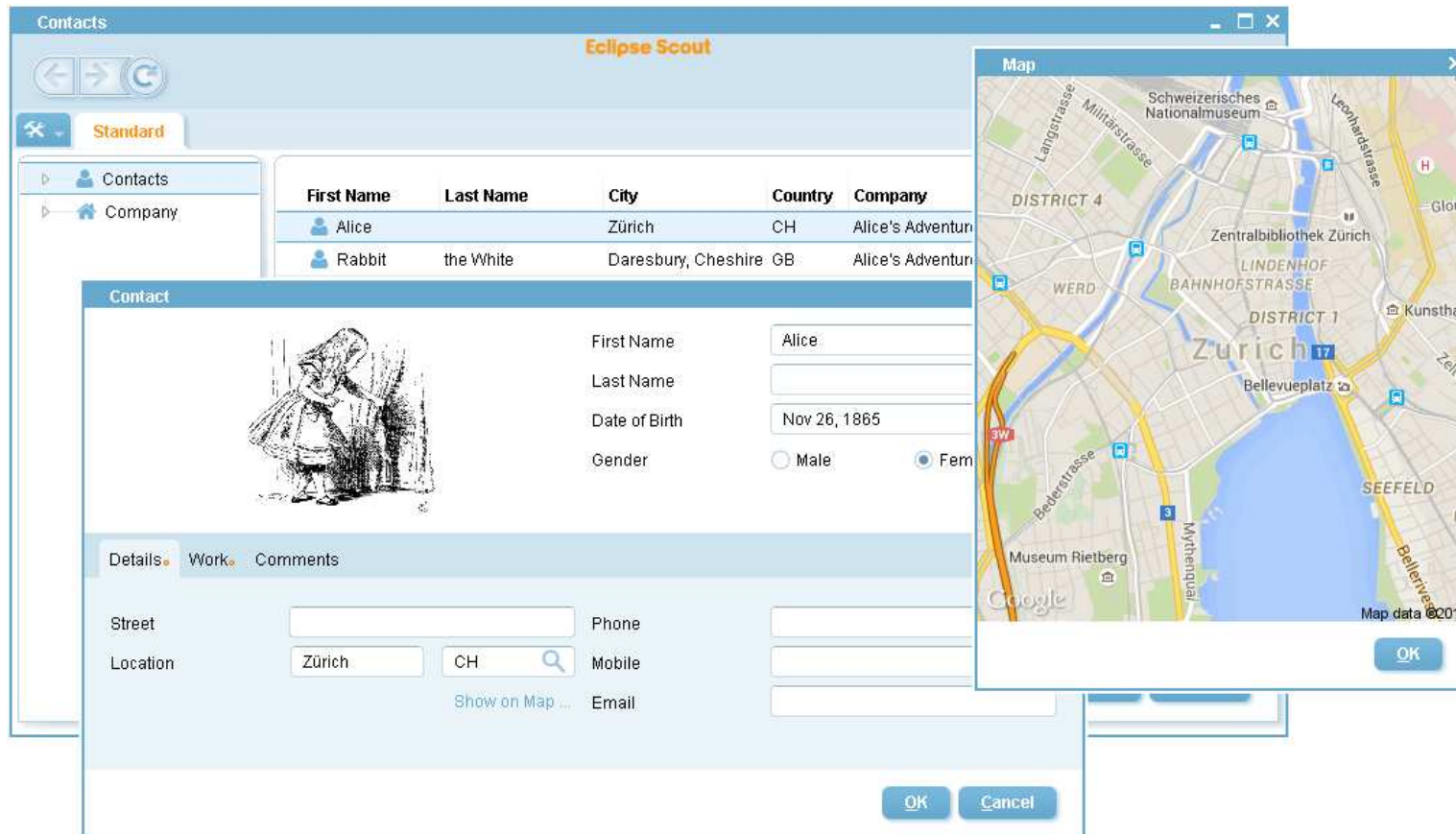
Scout Modularity: Slices



Demo Time



«Contacts» Application



Scout Layers

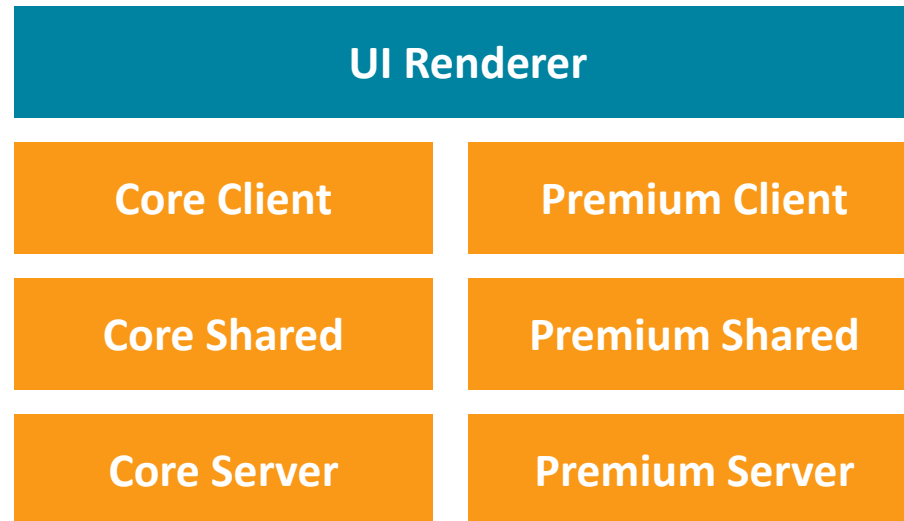
UI Renderer

Core Client

Core Shared

Core Server

Scout Slices



Scout Extensibility

The screenshot displays a web application interface for contact management. The browser address bar shows the URL: `localhost:8082/web#org.eclipsescout.contacts.client.ui.desktop.outlines.StandardOutline-Contacts`. The application has a sidebar with a menu containing "Contacts" and "Events", both highlighted with orange boxes. The main content area shows a table of contacts with columns for First Name, Last Name, City, Country, Company, and Events. The "Events" column is also highlighted with an orange box.

First Name	Last Name	City	Country	Company	Events
Alice		Daresbury, Cheshire	GB	Alice's Adventures in Wonderland	2
Rabbit	the White	Daresbury, Cheshire	GB	Alice's Adventures in Wonderland	1

A "Contact" modal window is open, showing details for a contact named Alice. The modal includes a profile picture of Alice, a "Details" tab, and an "Events" tab. The "Events" tab is highlighted with an orange box and contains a table of events:

Title	Starts	City	Country
★ EclipseCon 2015	3/9/15 9:00 AM	San Franc	US
★ JavaLand 2015	3/24/15 9:00 AM	Bruehl	DE

The modal also features "OK" and "Cancel" buttons at the bottom.

Summary

Modular Applications

- Keep architecture clean over many years

Scout Framework

- Built for **modular enterprise applications**
- Support for **layers** and **slices**
- **Extensibility** support (Mars Release)

Scout Outlook (Neon Release)

- Pure Java framework
- New HTML 5 renderer

Scout Widgets Demo App x

bsivp9027:8080/bsiwidgets_html/

Advanced Widgets

- ListBox
- TreeBox
- SmartField
- TreeField
- TableField
- ImageField
- SvgField

TableField
Advanced Widgets

Phone Assistant tomcat7

Aufwärts Anzeigen Sample Content Open in a dialog View source on GitHub

Examples

Default

Name	Size	Type	Date Modified	Read Only
bird.jpg	206 KB	JPG Image	10.06.15 13:06	<input type="checkbox"/>

Add File ... Open File Delete File

Konfiguration

TableField

Name	Location	Date	Industry	Participants	Attended	Phone
Eclipsecon USA	San Francisco, USA	18.03.2014	Software	680	<input type="checkbox"/>	+... ↑
Javaland	Bruehl, Germany	25.03.2014	Software	810	<input checked="" type="checkbox"/>	↓

New More ▾ Delete Delete delayed Toggle row enabled state Highlight

Selected Rows: 1

Inserted Rows:

Updated Rows: 1;2

Deleted Rows:

Default Icon Id:

Auto Resize Columns Row Icon Visible
 Is Visible Wrap Text
 Is Enabled Table Status Visible
 Is Editable Table Header Visible
 Multi Select [Toggle hor. alignment](#)
 Is Checkable

An aerial photograph of a tropical island. The water is a vibrant turquoise color, and the island is covered in lush green vegetation. Numerous small, thatched-roof huts are built on stilts over the water, connected by a network of wooden walkways. The huts have dark brown thatched roofs and light-colored walls. The overall scene is peaceful and idyllic.

@EclipseScout

Thanks! Questions?

matthias.zimmermann@bsi-software.com