



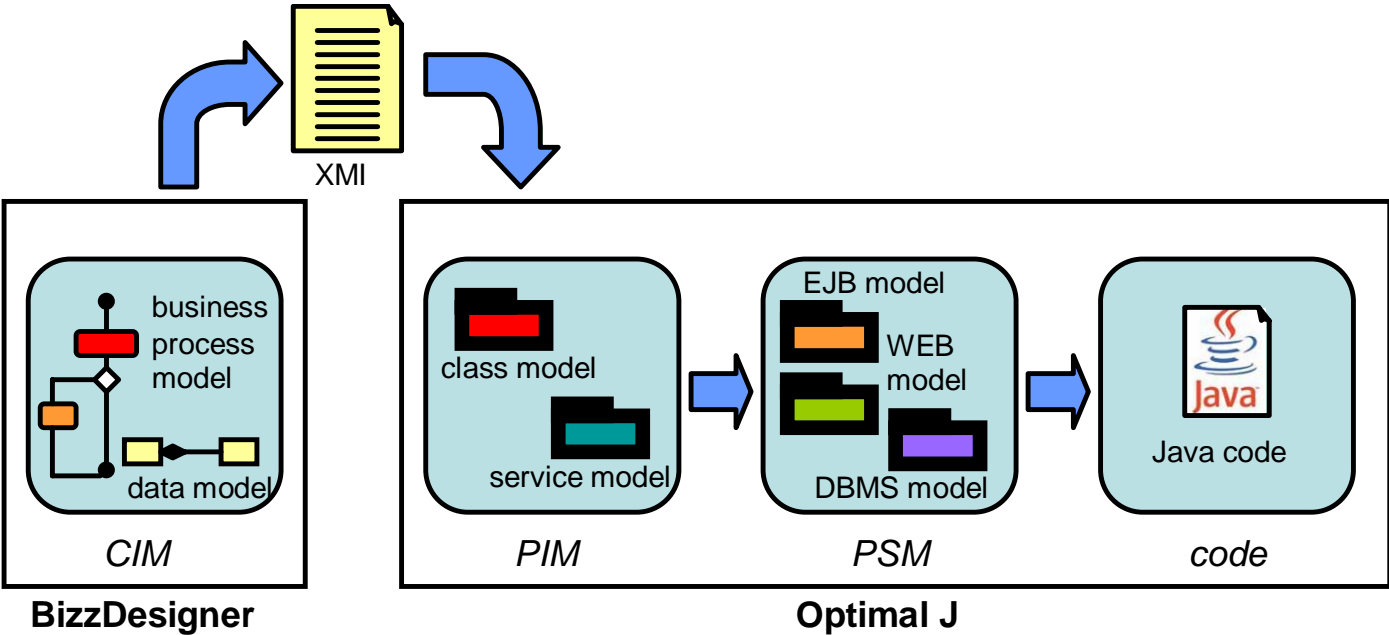
Integration of BiZZdesigner and OptimalJ

Maarten Steen
Telematica Instituut

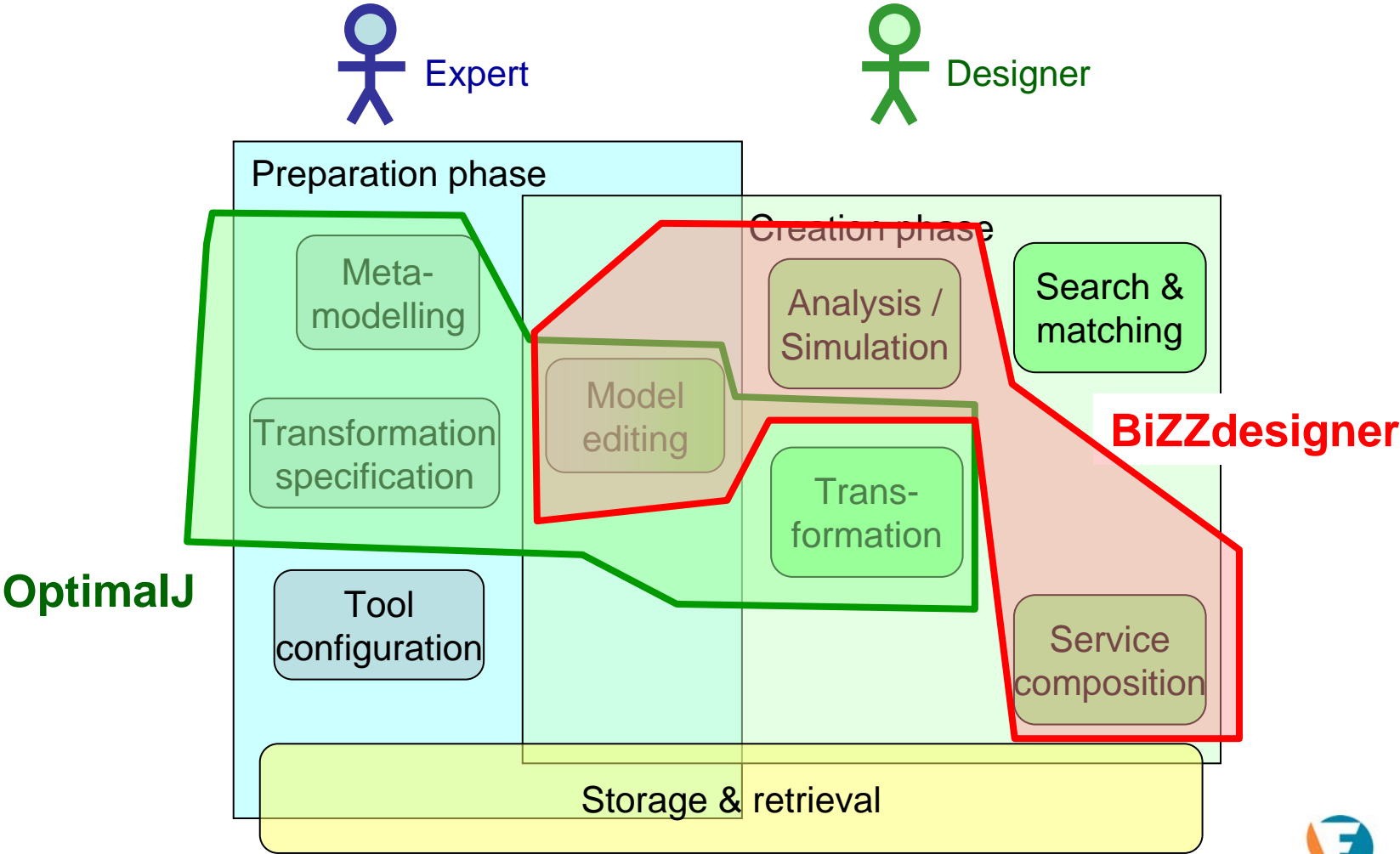
Presented at Eclipse Modelling
Symposium, Ludwigsburg,
9 October 2007



Goal: From Business Process Design to Running Code

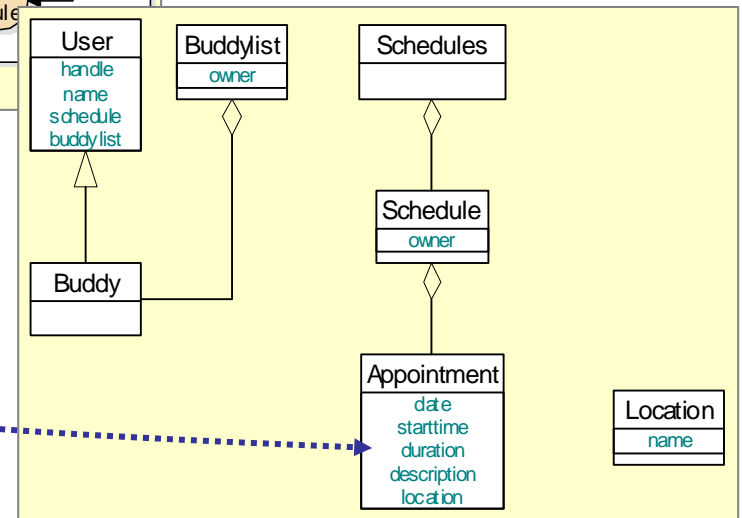
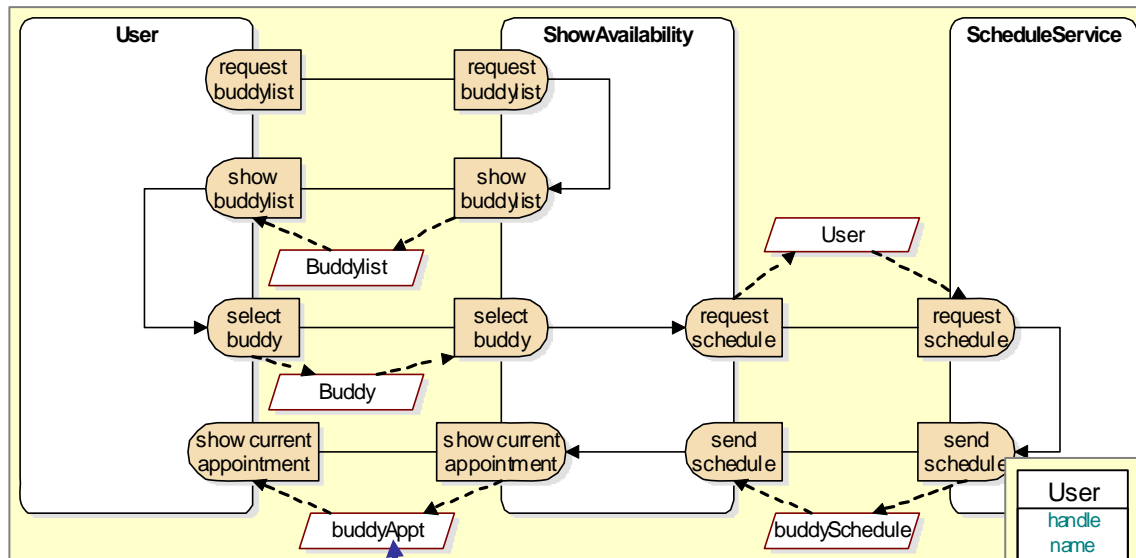


Coverage of Tool Functions



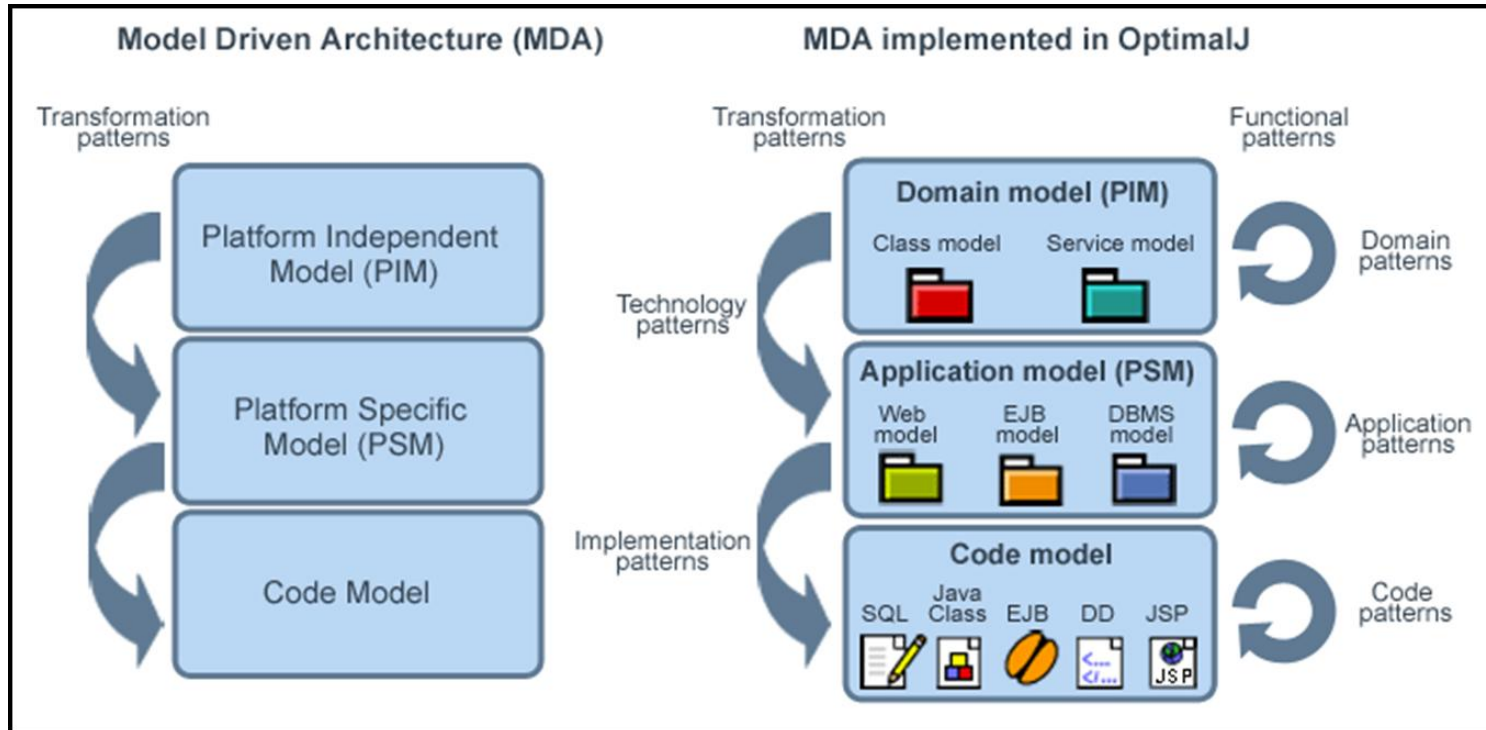
BiZZdesigner models

Behaviour diagram

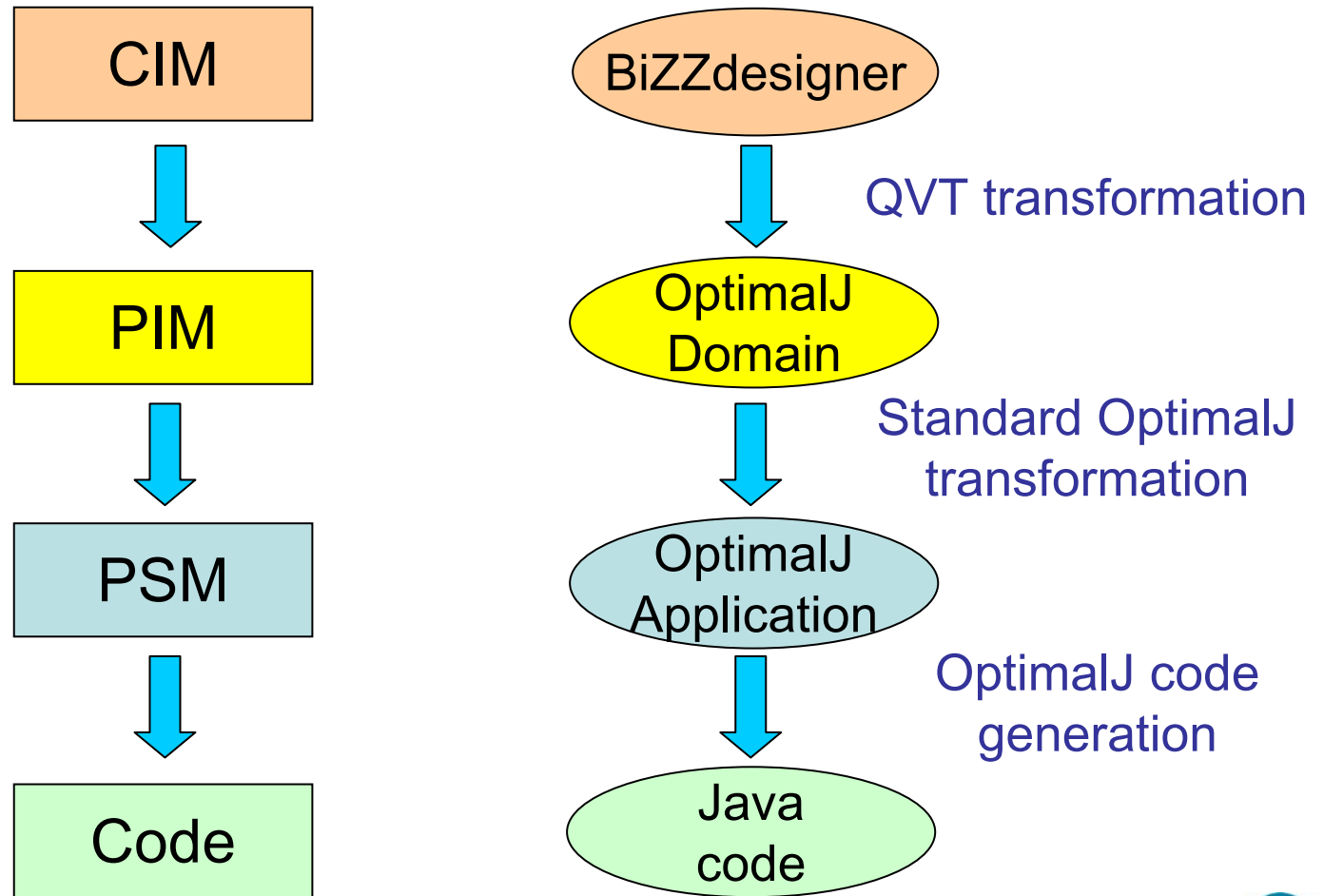


Data type diagram

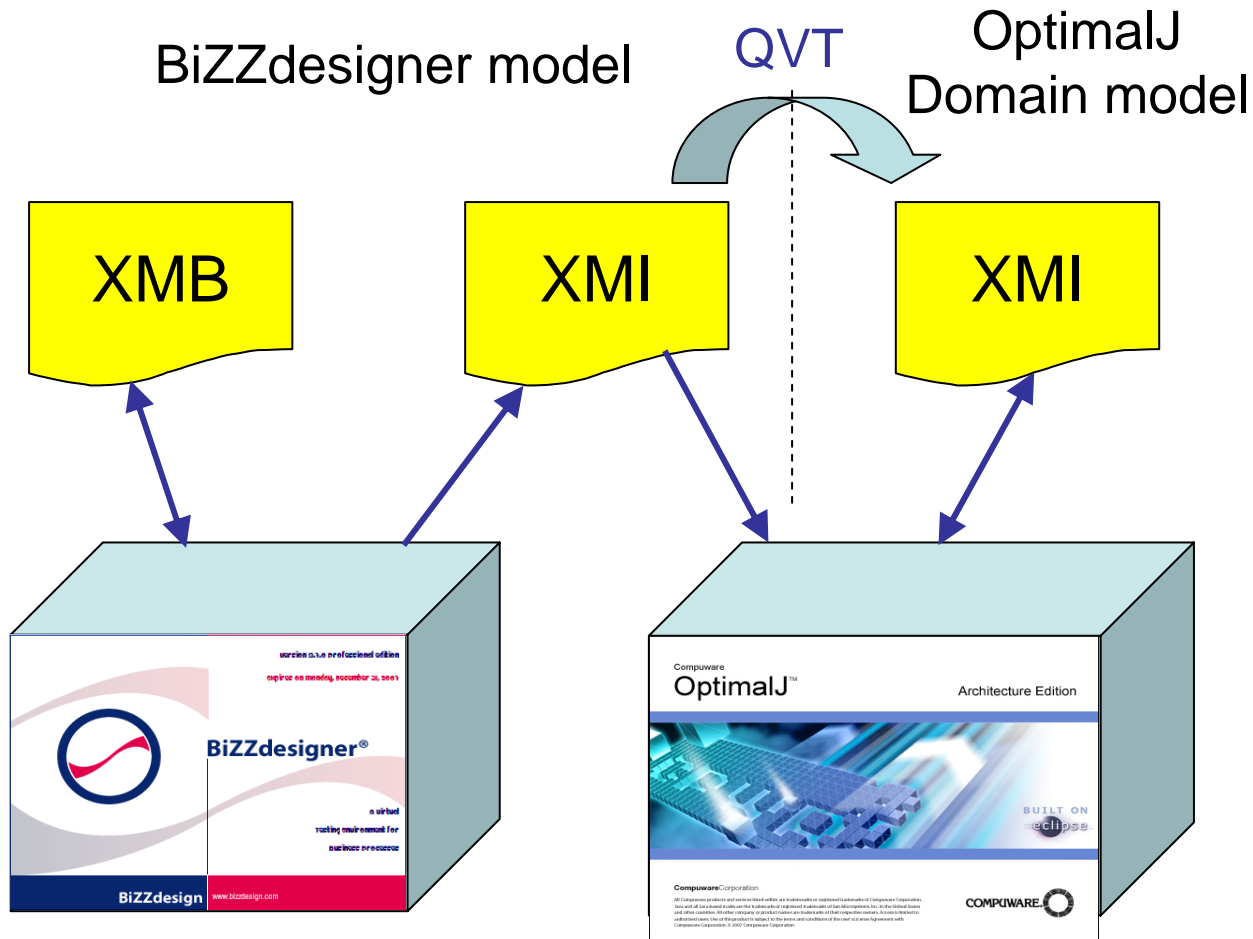
MDA in OptimalJ



Adding a Computation-Independent Layer

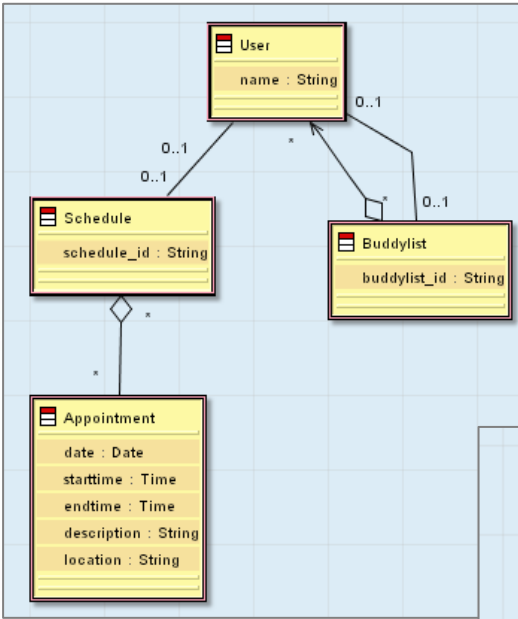


Integration of BiZZdesigner and OptimalJ

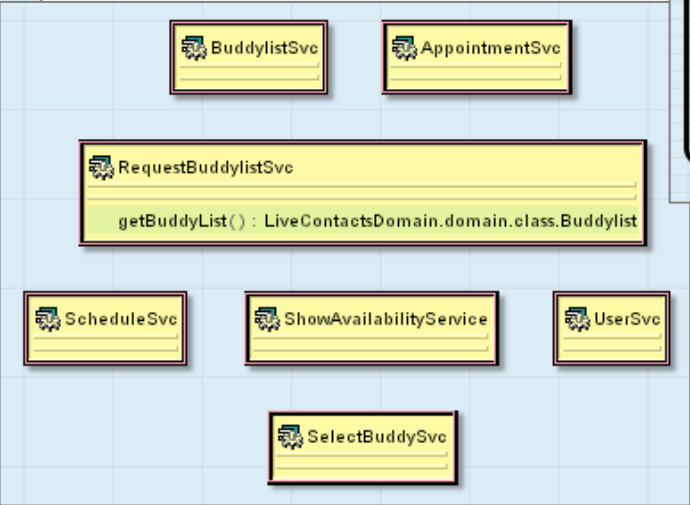


OptimalJ Domain model

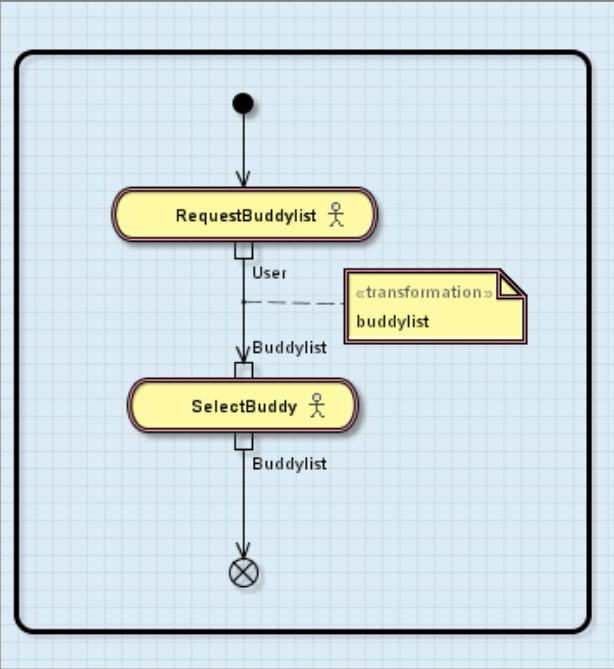
Class model



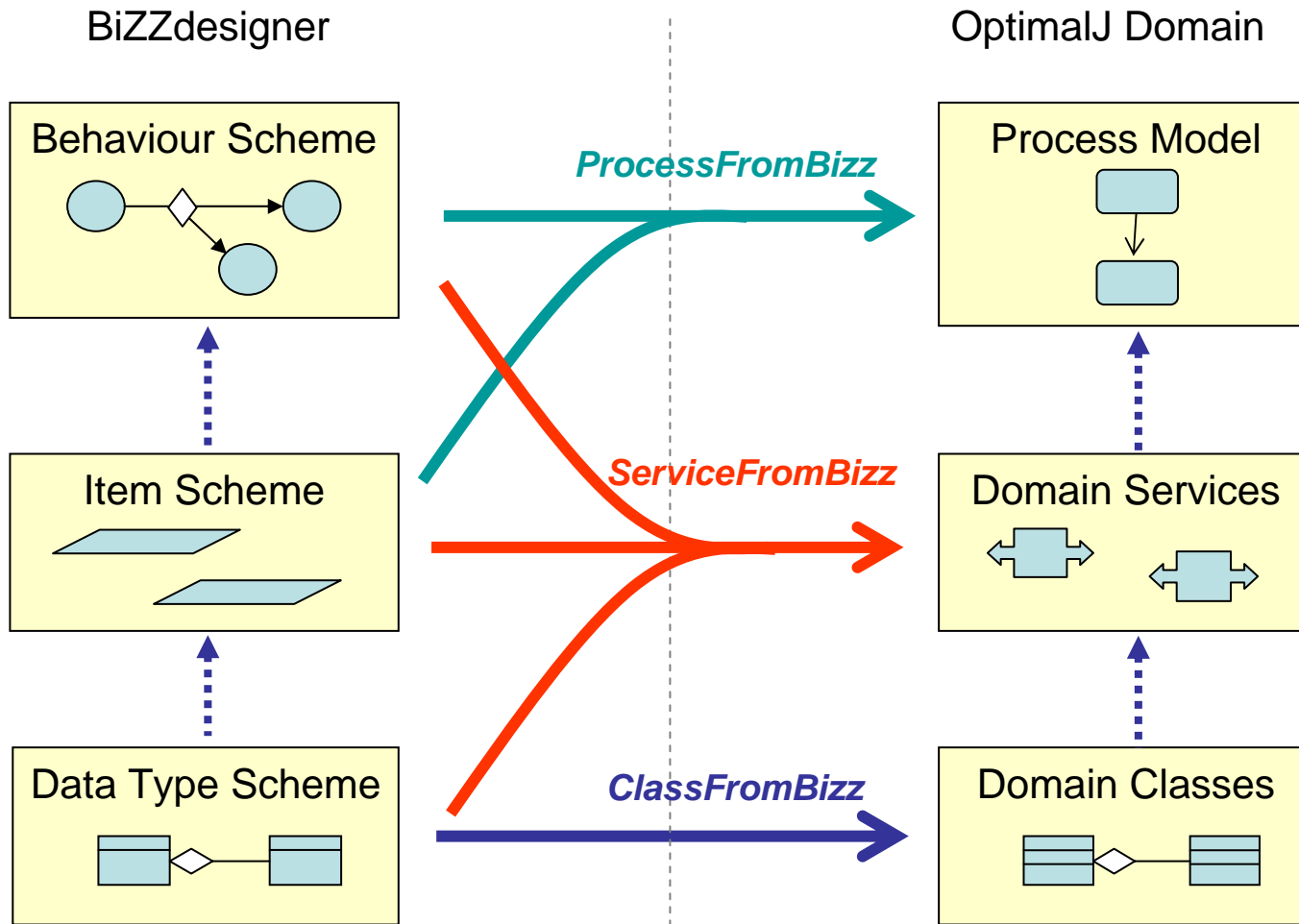
Service model



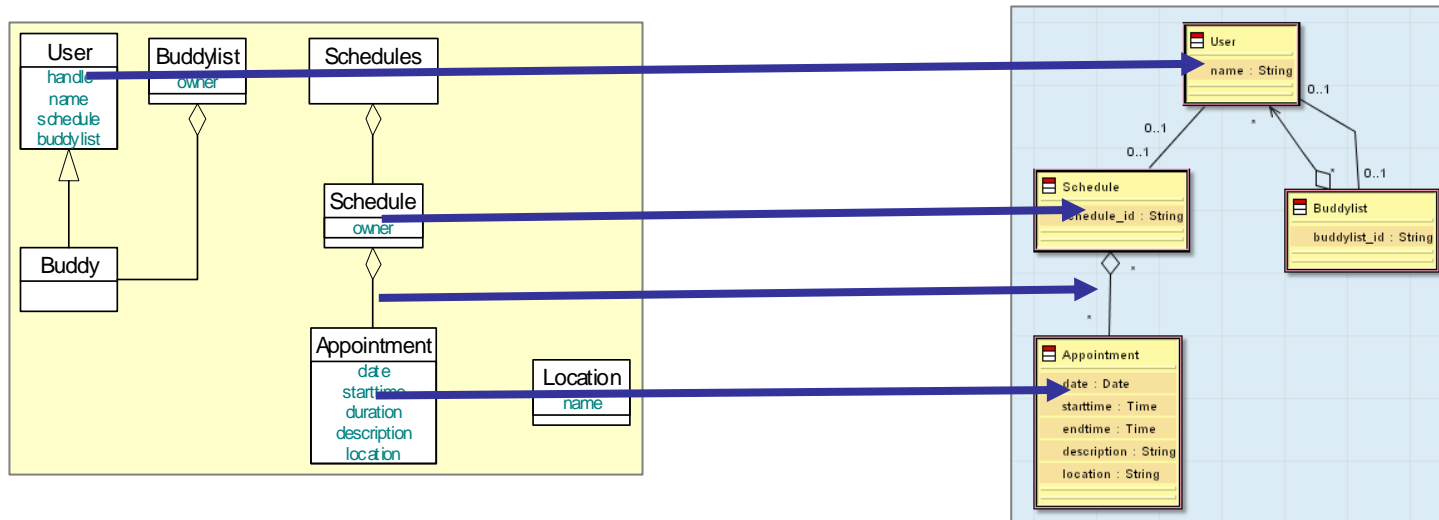
Process model



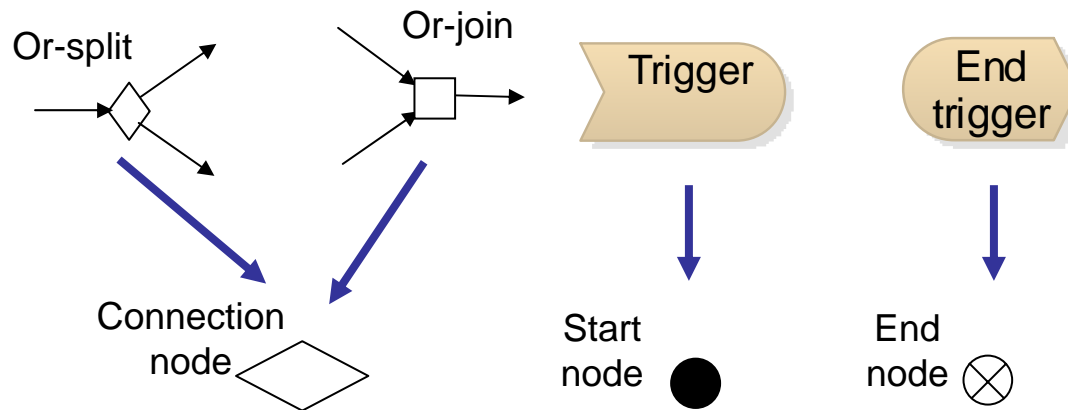
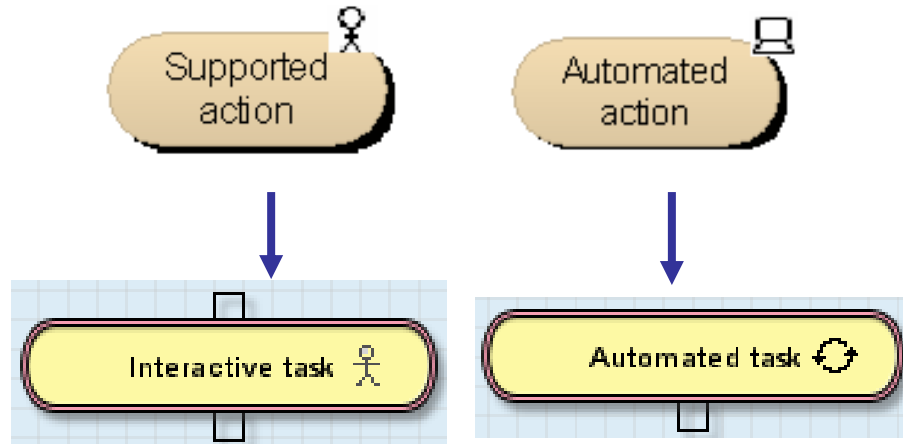
Bizz2Domain Transformations



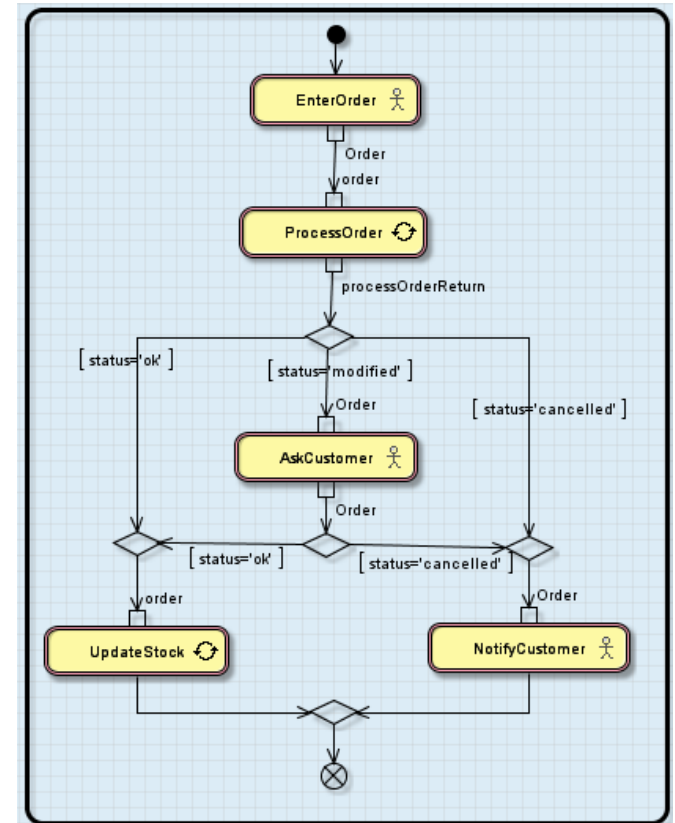
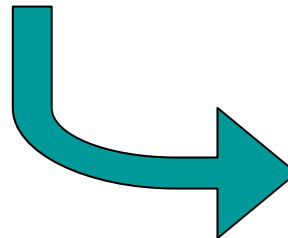
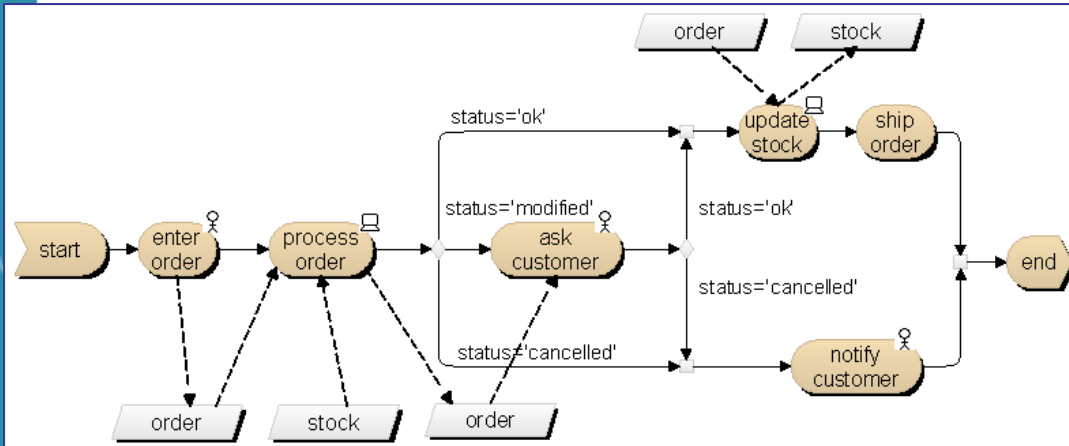
Transformation: Information



Mapping Rules: Behaviour



Behaviour Transformation: Example





About the A-MUSE Project



Introduction

Identified challenge

Shortened service lifecycle, evolving service requirements and dependency on services requires model-based development

Related international developments

- service-orientated architecture (SOA)
- model-driven architecture (MDA)

however

Lack of support for service behavior modeling

Service composition/interoperability still immature

Platform-independence of service models not addressed

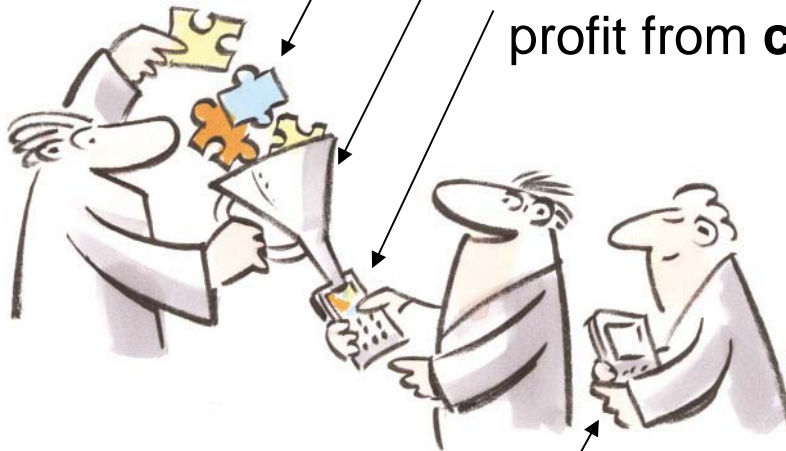
Context-awareness not explicitly considered

Overview of the A-Muse Project

Service building blocks underlain with sound **modeling approach**

Creation, composition and validation of services

Mobile services that can profit from **context-awareness**



A MUSE

Different platforms, which can profit from **platform-independence** of models

Some Highlights

- A-Muse DSL for high-level service specification
- The COSMO framework for service modelling
- A-Muse Abstract Platform
- *Integration of BiZZdesigner and OptimalJ*

- ... Generation of J2ME and .NET CF Applications from a Platform-Independent Model
- ... Graphical editor for the A-Muse DSL
- ... Re-creation of the LiveContacts Application using MDD

A-MUSE facts

- € 4.5 MLN budget
- 5 partners
 - University of Twente – CTIT
 - Telematica Instituut
 - Ericsson
 - BiZZdesign (since 2006)
 - Compuware (since 2006)
 - Lucent – Bell Labs (till 2005)
 - GigSoft (till 2005)



More Information

Maarten.Steen@telin.nl

<http://a-muse.freeband.nl/>

