



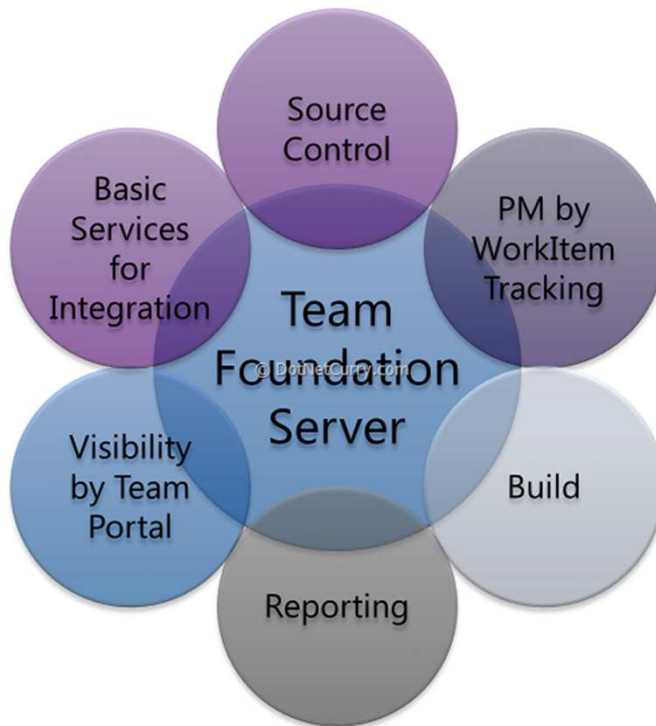
Thomas Zierer, Operating Office, IT Standards

Eclipse & TFS

24.06.2014, Eclipse Demo Camp, München



What is TFS ?



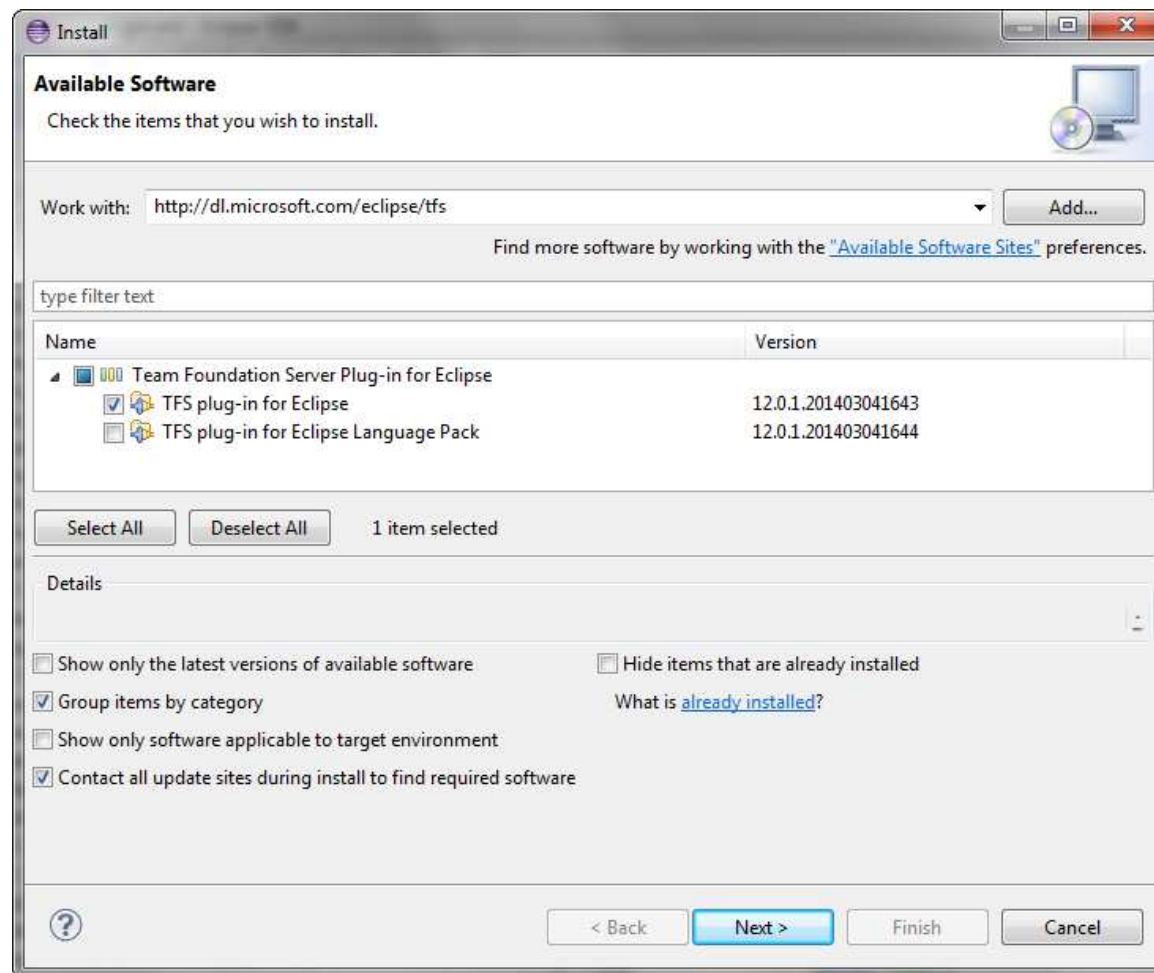
Team Foundation Server is the backbone of Microsofts application lifecycle management suite, i.e. it hosts

- Version control
- Issue tracking
- Project management
- Buildserver
- Reporting services
- Document management (Sharepoint)

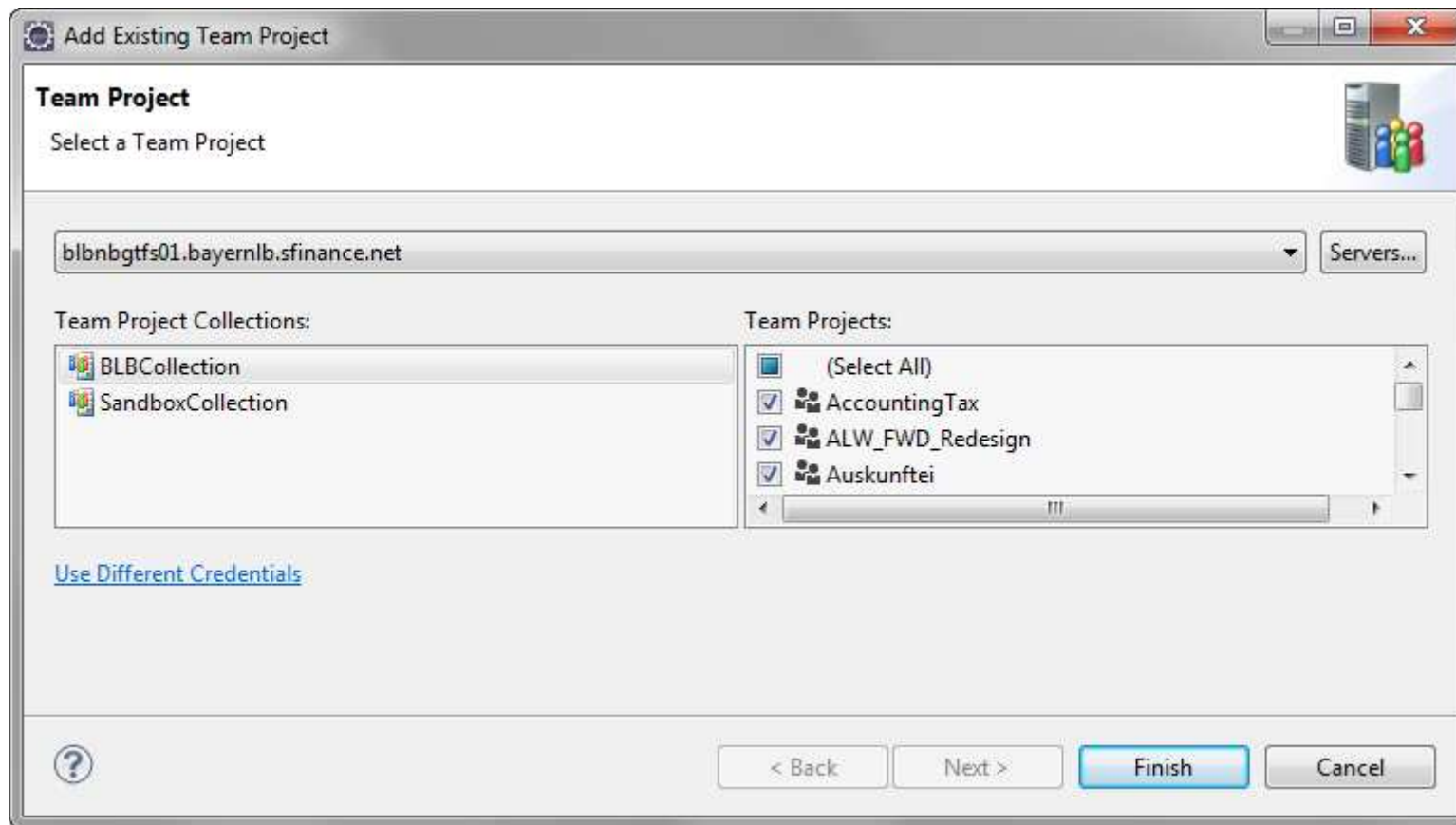


Demo: Create an Ant build with TFS

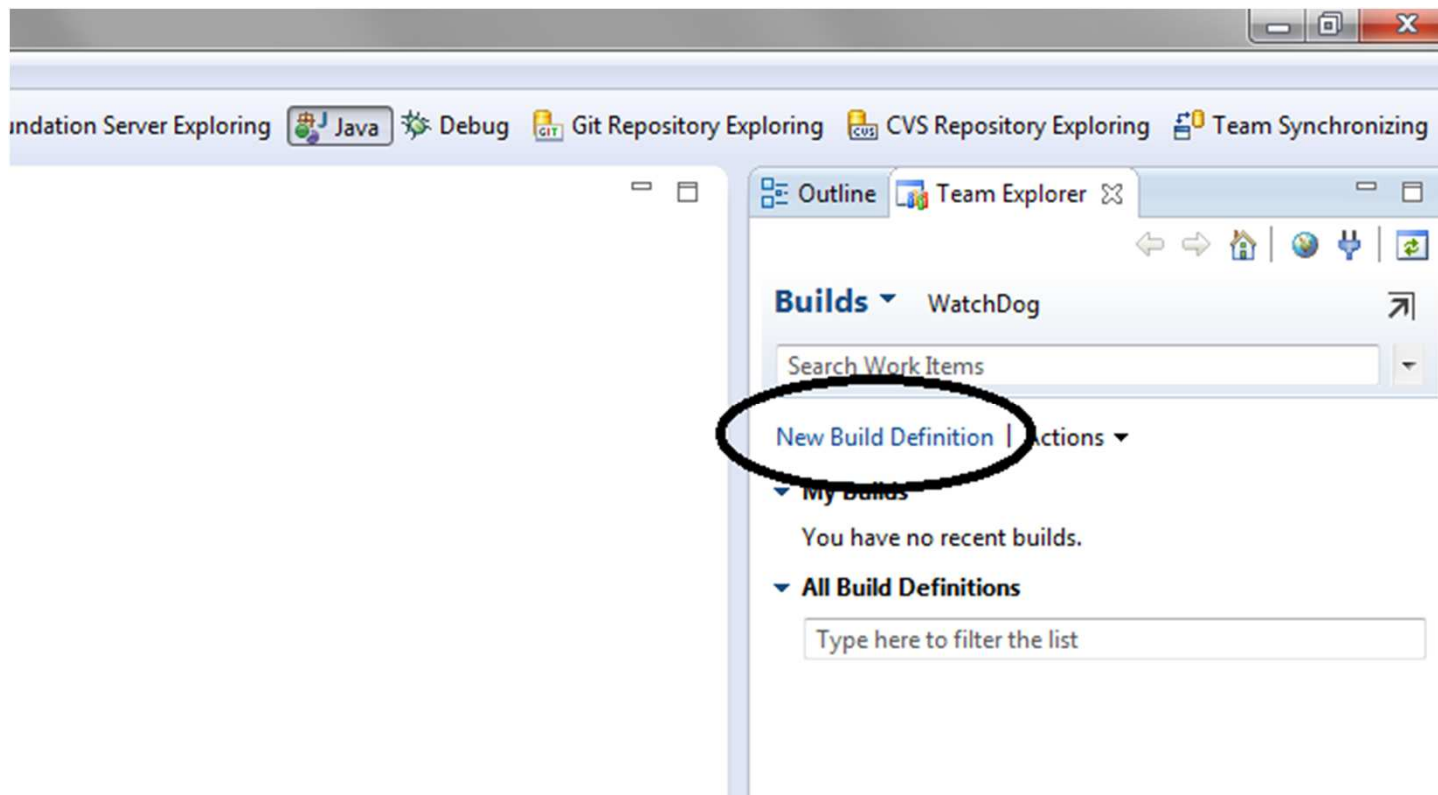
Demo: Install Team Explorer Everywhere Plugin



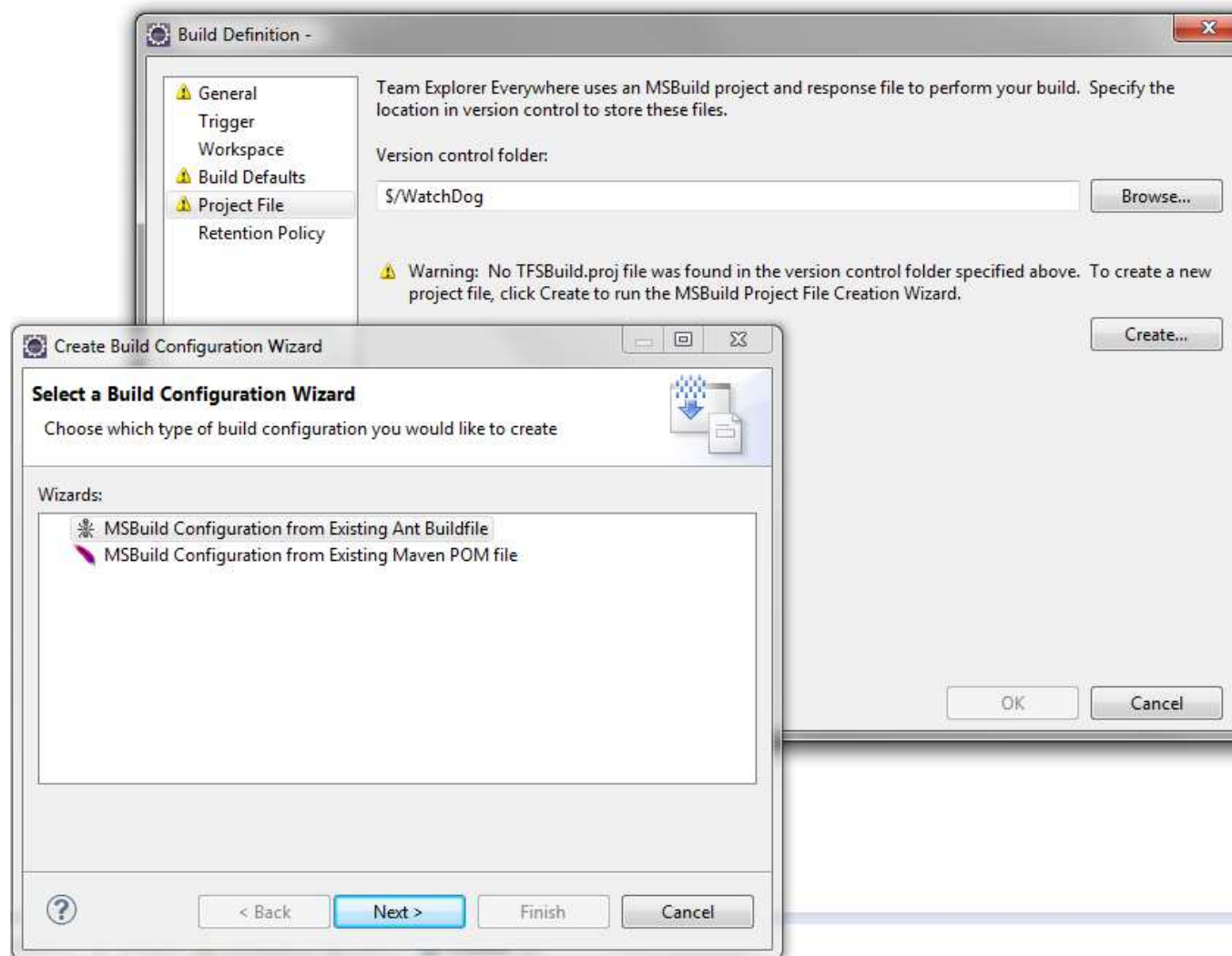
Demo: Connect to Team Foundation Server



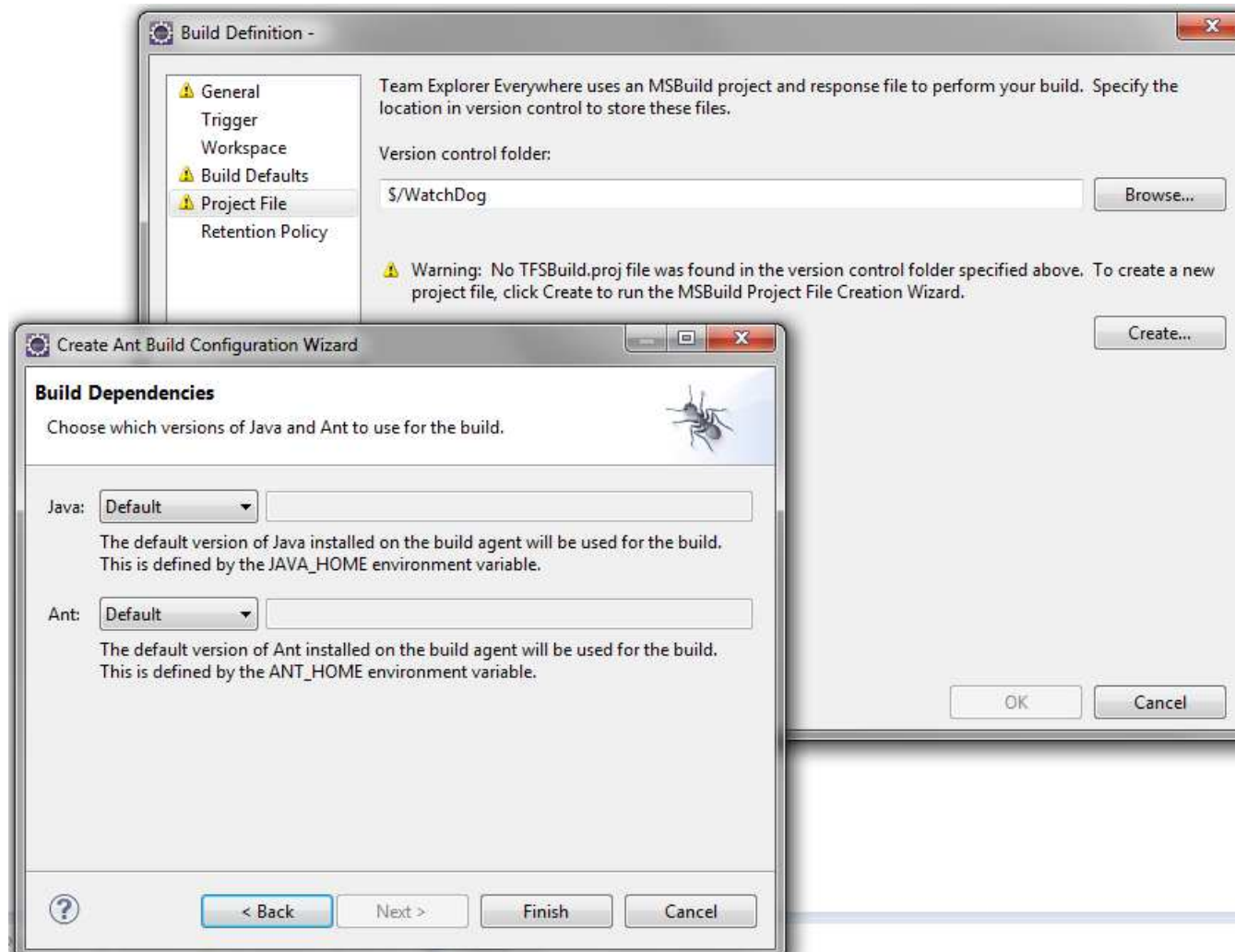
Demo: Create new build definition



Demo: Choose existing ant buildfile



Demo: Choose JDK and Ant installation



Demo: Queue the new build

Queue Build "Demo"

Select a build definition to build and specify an agent that will perform the build.

Build definition:
Demo

What do you want to build?
Latest sources

Shelveset name:
... Create...

Check in changes after successful build

Build controller:
Blbnbgf01 - Controller

Drop folder for this build:
\\blbnbgf01\Drop

Priority in queue: Normal Position: 1

MSBuild command-line arguments (optional):

Queue Cancel

Demo: Check the build log

Build Explorer - Blb_Discover_Kundenspiegel_build Blb_Discover_Kundenspiegel_build_20140115.1

Blb_Discover_Kundenspiegel_build_20140115.1 - Build succeeded - <No Quality Assigned>

View Summary View Log 1 Open Drop Folder Retain Indefinitely Delete Build

Y08577 triggered Blb_Discover_Kundenspiegel_build (DC_Discover) for changeset 2015
Ran for 3,7 minutes (Blbnbgts01 - Controller), completed 169 days ago

Latest Activity

Build last modified by SvcTFSBuild 169 days ago.

Summary

Any CPU | Debug

0 error(s), 5 warning(s)

\$/DC_Discover/Blb_Discover_Kundenspiegel_build/build.xml - 0 error(s), 5 warning(s), [View Log File](#)

- ⚠ F:\Builds\Builds\1\DC_Discover\Blb_Discover_Kundenspiegel_build\Binaries\src\de\blb\dc\ks\bean\BlbDckServiceLocator.java (116): warning: [unchecked] unchecked call to add(E) as a member of the raw type HashSet
- ⚠ F:\Builds\Builds\1\DC_Discover\Blb_Discover_Kundenspiegel_build\Binaries\src\de\blb\dc\ks\bean\BlbDckSoapBindingStub.java (78): warning: [unchecked] unchecked call to add(E) as a member of the raw type Vector
- ⚠ F:\Builds\Builds\1\DC_Discover\Blb_Discover_Kundenspiegel_build\Binaries\src\de\blb\dc\ks\bean\BlbDckSoapBindingStub.java (80): warning: [unchecked] unchecked call to add(E) as a member of the raw type Vector
- ⚠ F:\Builds\Builds\1\DC_Discover\Blb_Discover_Kundenspiegel_build\Binaries\src\de\blb\dc\ks\bean\BlbDckSoapBindingStub.java (81): warning: [unchecked] unchecked call to add(E) as a member of the raw type Vector
- ⚠ F:\Builds\Builds\1\DC_Discover\Blb_Discover_Kundenspiegel_build\Binaries\src\de\blb\dc\ks\bean\BlbDckSoapBindingStub.java (82): warning: [unchecked] unchecked call to add(E) as a member of the raw type Vector

1 projects/solutions compiled

\$/DC_Discover/Blb_Discover_Kundenspiegel_build/build.xml - 0 error(s), 5 warning(s), [View Log File](#)

- ✖ 1 test run(s) completed - 50% average pass rate
- ✖ 2/4 test(s) passed, 2 failed, 0 inconclusive

No Code Coverage Results

Associated Changesets

Changeset 2015, Checked in by Y08577
WebSphere V8

Changeset 2006, Checked in by Y08577
WebSphere v8

Changeset 2001, Checked in by Y08577
WAS v8

Changeset 1554, Checked in by Y08577

Conclusion

- Team Foundation Server with Team Explorer Everywhere plugin supports version control, build management, issue tracking, project planning and reporting for Java projects
- Some features are only available through the Web-UI (e.g. Team Project creation)
- Team Foundation Version Control is *not* suitable for Eclipse (unfamiliar handling + several, although minor bugs)
- Choose Git as alternative version control system instead (since TFS 2013)
 - No need for Team Explorer Everywhere Plugin except for build definition
 - Just use EGit



Thank you very much for your attention

Email: thomas.zierer@bayernlb.de